



# Two Bedroom Apartment

## SOUTH/EAST AND SOUTH/WEST WINGS

Consisting of two bedrooms, a living room and a kitchen, its size and comfort make it the perfect solution in Praia da Rocha for families or larger groups of up to 6 people.

### FEATURES



**Area:**  
66m<sup>2</sup> (710 sq.ft.)



**Balcony:**  
6m<sup>2</sup> (64 sq.ft.)



**Maximum occupancy:**  
6 adults or 5 adults + 1 child or 4 adults + 2 children  
(children from 3 to 12 years old)

### EQUIPMENTS



#### Beds

- 1 x double bed (2,00 x 1,40m) and 2 x single bed (2,00 x 0,90m)
- 1sofa bed: 1 x single (1,96 x 0,90m) e 1 x single (1,96 x 0,84m)



#### Air conditioning

- available in the living room



#### Internet

- free Wi-Fi



#### 1 LCD

- with cable TV and Sport TV



#### Full bathroom (1x)

- bathtub with incorporated shower
- hairdryer
- bathroom amenities: bath gel and shampoo



#### Telephone

- direct dial telephone



#### Dining Room

- with table and chairs



#### Safety box

- extra cost



#### Kitchen equipment

- electric board (x4)
- refrigerator
- kitchen utensils
- microwave, electric kettle and toaster



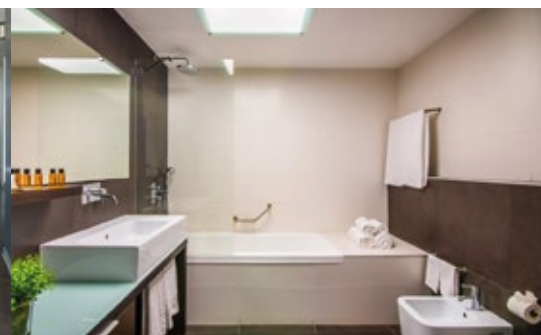
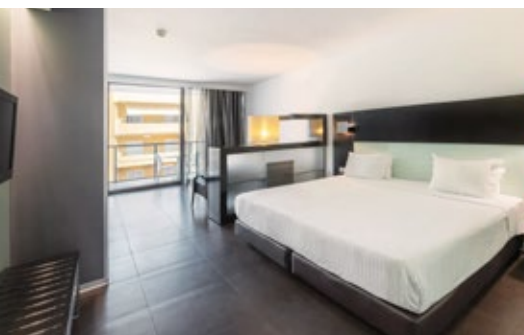
#### Balcony

- with table and chairs



#### Others

- iron and tablecloth on request  
(subject to availability)



Av. Comunidade Lusíada, Edifício Amarilis, 8500-801 Portimão

Bookings: +351 304 502 640 | 24h information: +351 282 411 857 (calls to the national network)



clubamarilis@rrhotels.pt



www.rrhotels.pt



/clubamarilis



@clubamarilis



@rrhotels